

Strategic Financial Goal

The WSBA's strategic financial goal is to be fiscally responsible: to operate a well-managed and financially sound association, to be accountable to our members and the public, and to use our resources wisely in ways that accomplish our mission.

Fund Categories

The WSBA accounts for revenues and expenses in four categories: General Fund, Continuing Legal Education (CLE), Sections, and Lawyers' Fund for Client Protection (LFCP).

General Fund

The general fund consists of our regulatory functions and most services to members and the public. It is funded by member license fees and revenues from services. For FY 2008, the general fund had expenses in excess of revenues of \$182,443. As of September 30, 2008, the general fund balance was \$5,240,955, of

which \$1,500,000 is designated as an operating reserve, \$2,500,000 is designated as a facilities reserve, \$500,000 is designated as a capital reserve, and \$175,000 is designated as a board program reserve. The remaining \$565,955 is unrestricted.

Continuing Legal Education (CLE) Fund

CLE programs and products are entirely self-funded by seminar registration fees and sales of deskbooks and other publications. The CLE fund budgeted for expenses over revenues of \$73,997. Actual results were that expenses exceeded revenues by \$43,951, bringing CLE's fund balance as of September 30, 2008, to \$1,947,887.

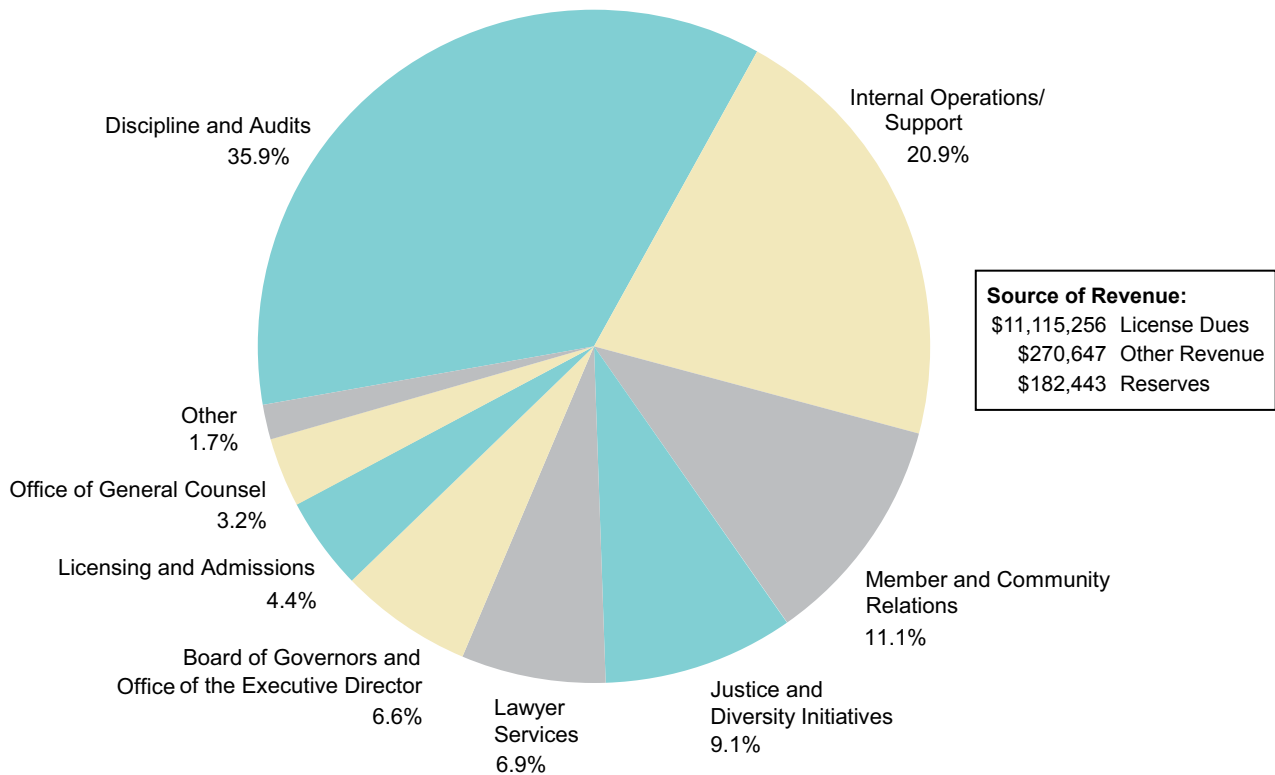
Sections Fund

The WSBA's 27 sections are a voluntary activity for WSBA members and are supported through section dues and fees for section products and services. All net income from sections is carried forward in each section's net assets for use by

that section in future years. The sections budgeted for expenses over revenues of \$223,992 (in order to use past accumulated reserves to benefit their members). Actual results for the sections were that expenses exceeded revenues by \$91,829. The sections fund balance at September 30, 2008, was \$805,101.

Lawyers' Fund for Client Protection (LFCP)

The LFCP may be used for relieving a loss sustained by a person due to the dishonesty of, or failure to account for money entrusted to, a member of the WSBA in connection with the member's practice of law. It is funded by an annual assessment on all active WSBA members. The LFCP fund budgeted for revenues over expenses of \$103,250. Actual results were expenses over revenues of \$467,435. Close to \$700,000 in claims were paid as a result of one lawyer's dishonest acts. The LFCP's fund balance as of September 30, 2008, was \$231,804.

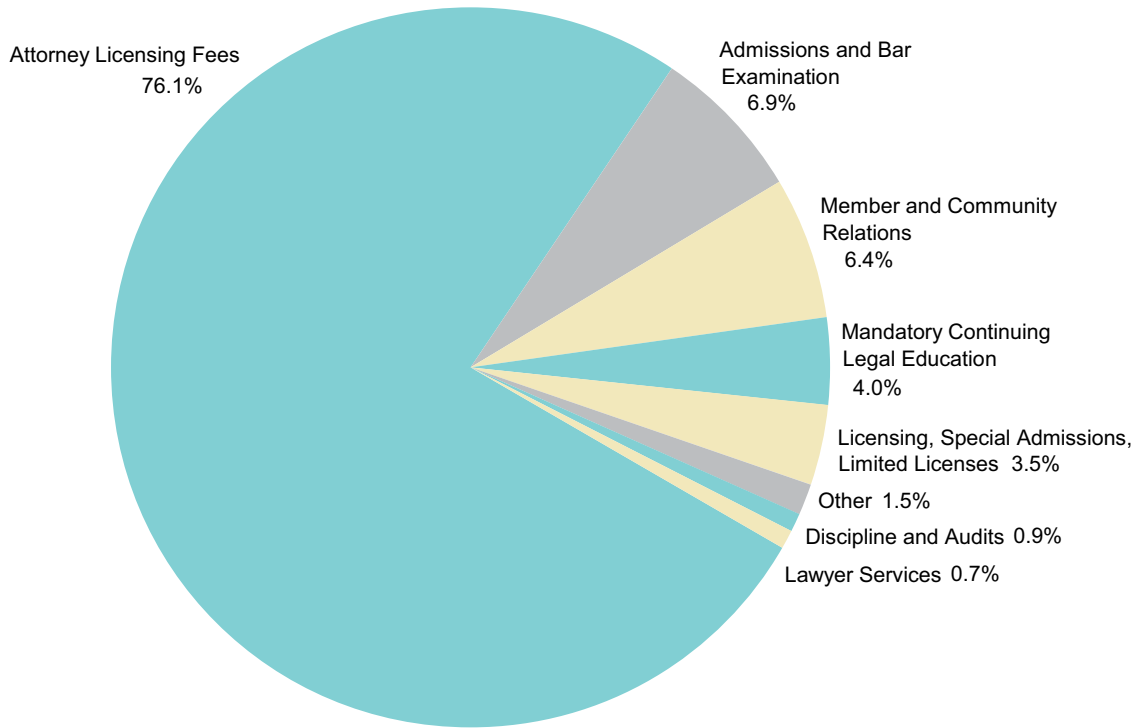


FY09 General Fund Expenses
 Functions Supported by License Fees and Other Net Revenue

Statements of Activities

	Year ended September 30, 2008			Year ended September 30, 2007		
	2008 Actual Revenue	2008 Actual Dir Exp.	2008 Actual Net	2007 Actual Revenue	2007 Actual Dir Exp.	2007 Actual Net
Access to Justice	29,320	400,996	-371,676	52,585	404,279	-351,694
Administration	46,323	1,205,971	-1,159,648	592,566	1,159,830	-567,264
Alternate Dispute Resolution	7,175	56,935	-49,760	4,355	57,361	-53,006
Attorney Licensing Fees	11,115,256	0	11,115,256	10,612,853	0	10,612,853
Audits	2,038	205,960	-203,922	3,654	218,193	-214,539
Bar Examination and Admissions	1,010,768	1,040,297	-29,529	1,294,664	932,370	362,294
Bar Leaders Support	1,890	277,526	-275,636	56,418	396,030	-339,612
Bar News	710,414	931,715	-221,301	656,748	851,428	-194,680
Board of Governors & Office of the Executive Director	34,475	792,578	-758,103	0	690,617	-690,617
Communications	10,733	555,746	-545,013	6,515	595,284	-588,769
Discipline	134,492	3,896,106	-3,761,614	92,435	3,646,673	-3,554,238
Human Resources	0	298,616	-298,616	0	281,225	-281,225
Information Technology	0	964,814	-964,814	0	912,596	-912,596
Justice Programs	0	181,163	-181,163	0	192,122	-192,122
Law Office Management Assistance Program	39,832	242,716	-202,884	59,052	232,834	-173,782
Lawyers Assistance Program	54,584	419,128	-364,544	55,046	413,888	-358,842
Legislative	0	238,704	-238,704	0	267,779	-267,779
Licensing and Membership Records	60,926	545,771	-484,845	61,048	678,545	-617,497
Limited Practice Officers	197,851	155,926	41,925	227,339	153,320	74,019
Mandatory Continuing Legal Education	588,094	458,870	129,224	590,586	423,440	167,146
Member Benefits	81,000	47,712	33,288	8,427	48,018	-39,591
New Lawyer Education	0	46,068	-46,068	0	131,923	-131,923
Office of General Counsel	3,030	378,870	-375,840	786	312,762	-311,976
Office of General Counsel — Disciplinary Board	0	191,530	-191,530	0	183,393	-183,393
Outreach and Education	24,870	291,812	-266,942	0	54,955	-54,955
Practice of Law Board	0	148,041	-148,041	0	145,334	-145,334
Professional Responsibility Program	0	182,491	-182,491	382	223,988	-223,606
Regulatory Services	251,065	221,103	29,962			
Resources Directory	81,884	45,636	36,248	97,247	45,773	51,474
Sections Administration	103,896	158,471	-54,575	113,261	133,515	-20,254
Young Lawyers Division	22,685	213,772	-191,087	25,416	224,324	-198,908
Total Unrestricted — General	14,612,601	14,795,044	-182,443	14,611,383	14,011,799	599,584
Unrestricted — Continuing Legal Education						
CLE Products	553,126	587,616	-34,490	741,866	745,099	-3,233
CLE Seminars	2,317,060	2,326,521	-9,461	2,216,650	2,175,820	40,830
Total Unrestricted — CLE	2,870,186	2,914,137	-43,951	2,958,516	2,920,919	37,597
Unrestricted — Sections Operations	443,806	535,635	-91,829	566,995	548,882	18,113
Restricted — Lawyers' Fund for Client Protection	475,529	942,964	-467,435	481,852	578,768	-96,916
Total	18,402,122	19,187,780	-785,658	18,618,746	18,060,368	558,378

FY08 General Fund Revenue



FY08 General Fund Expenses

